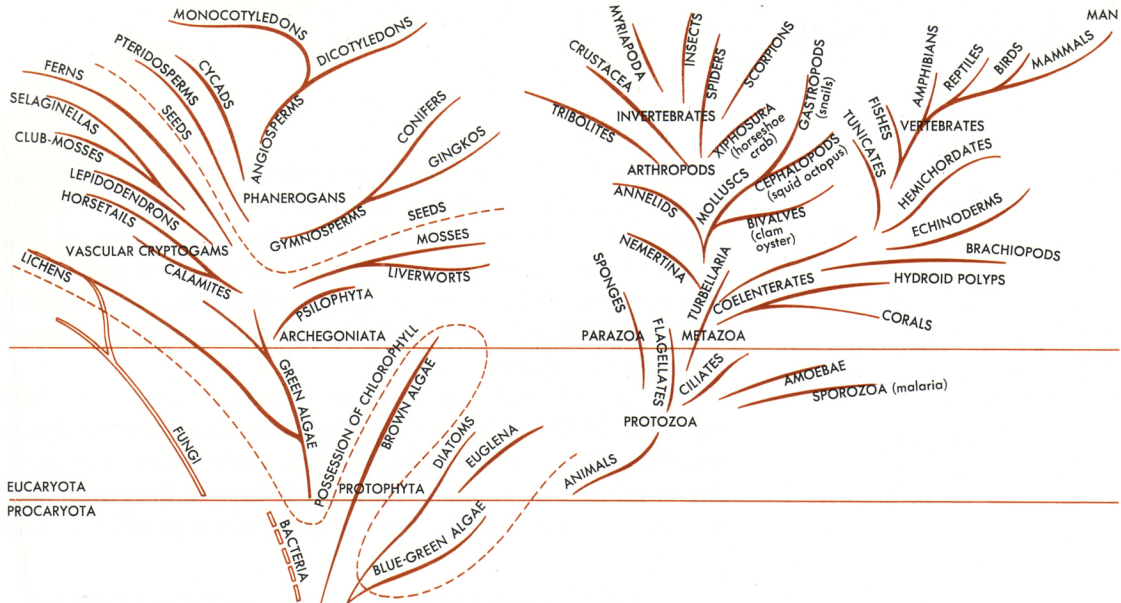


S+EF

Diagram showing suggested relationships of the more important animal groups.



BEGINNING OF THREAD OF LIFE

CHEMICAL EVOLUTION

ORIGIN OF UNIVERSE AND SOLAR SYSTEM

THE ANIMAL KINGDOM

THE SPONGE PHYLUM ...

Bath sponge



Finger sponge



Simple sponge



THE COELENTERATE PHYLUM ...



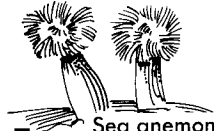
Hydra



Jellyfish

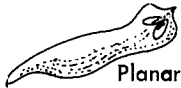


Coral



Sea anemone

THE FLATWORM PHYLUM ...



Planaria



Tapeworm



Fluke

THE ROUNDWORM PHYLUM ...



Hookworm

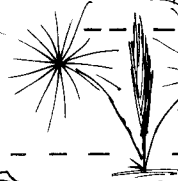
Trichina



THE SEGMENTED WORMS ...



Earthworm



Peacock
(sea worm)

THE MOLLUSKS ...



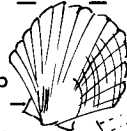
Chiton



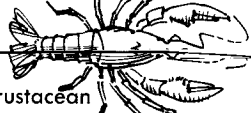
Squid



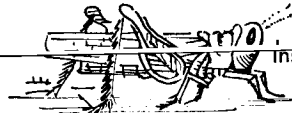
Scallop



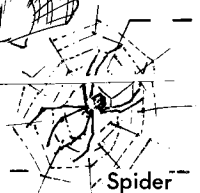
THE ARTHROPODS ...



Crustacean



Insect



Spider

THE STARFISH PHYLUM ...



Sea urchin

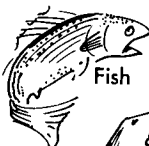


Starfish



Sea lily

FISH AND AMPHIBIANS ...



Fish



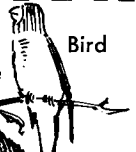
Frog



Cobra snake



Turtle

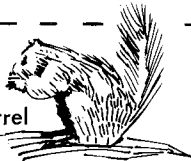


Bird

MAMMALS ...



Seal



Squirrel



Gorilla

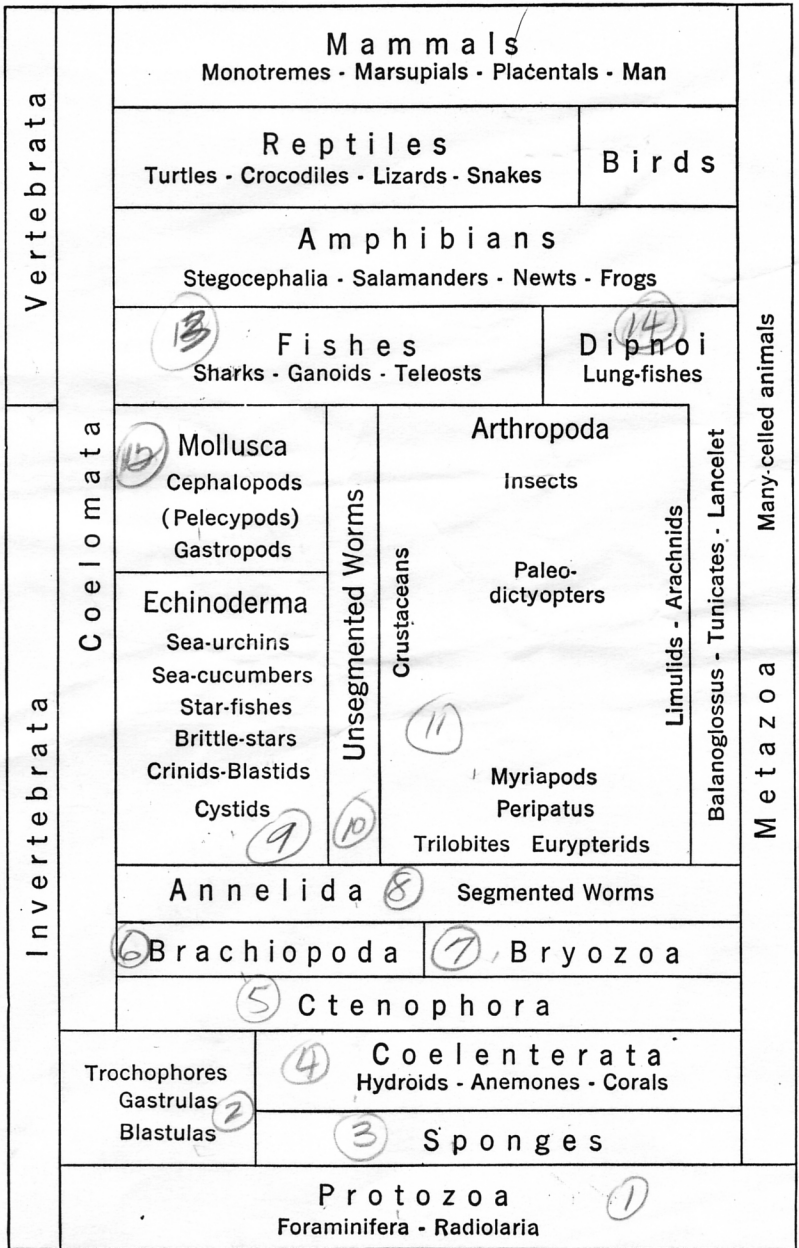


Fig. 4. — Diagram to show the interrelationship of animals, beginning with the lowest type at the bottom and closing with the highest at the top. Study this diagram with the one on page 13.

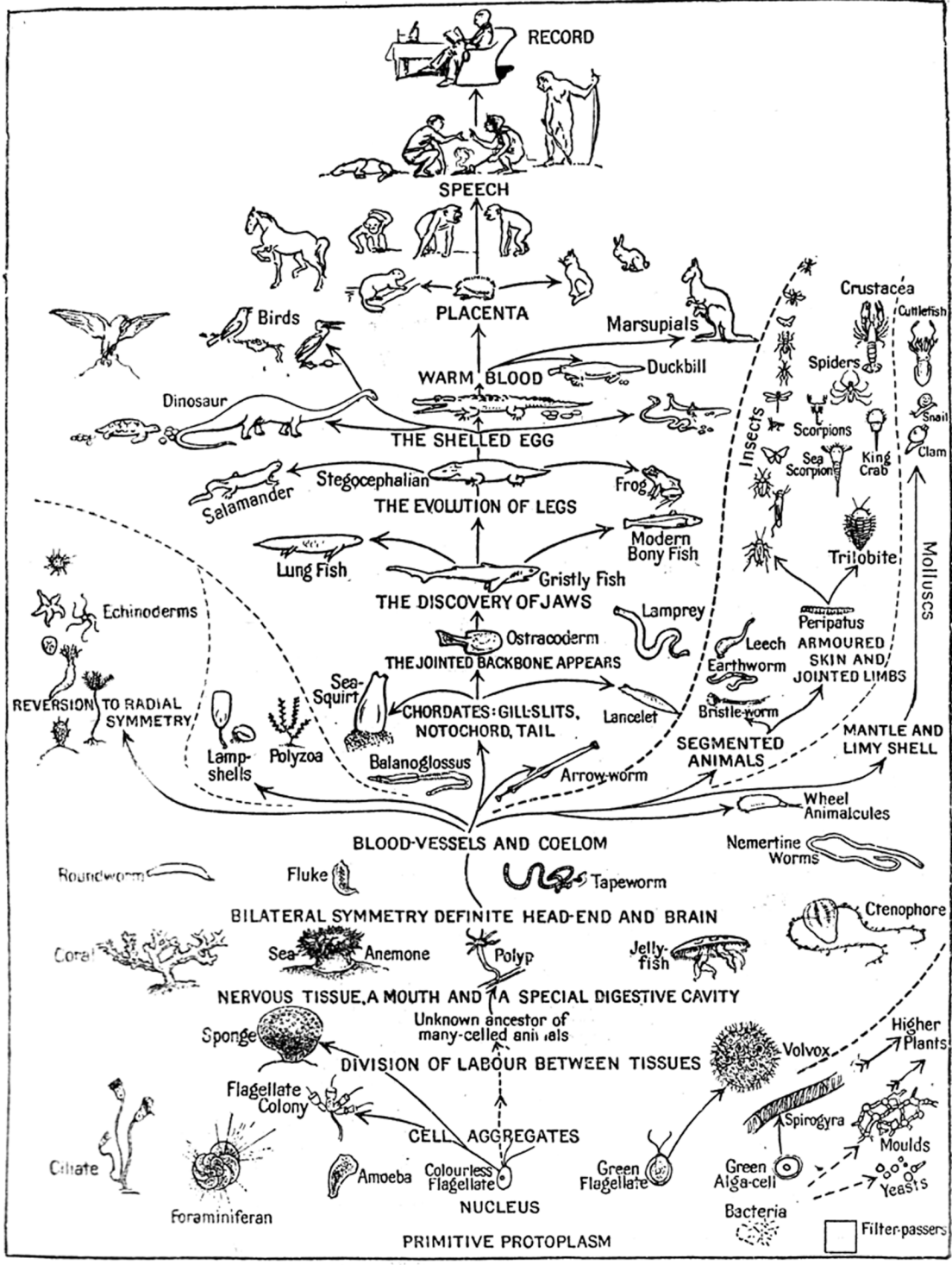


FIG. 215. The Ascent of Life.

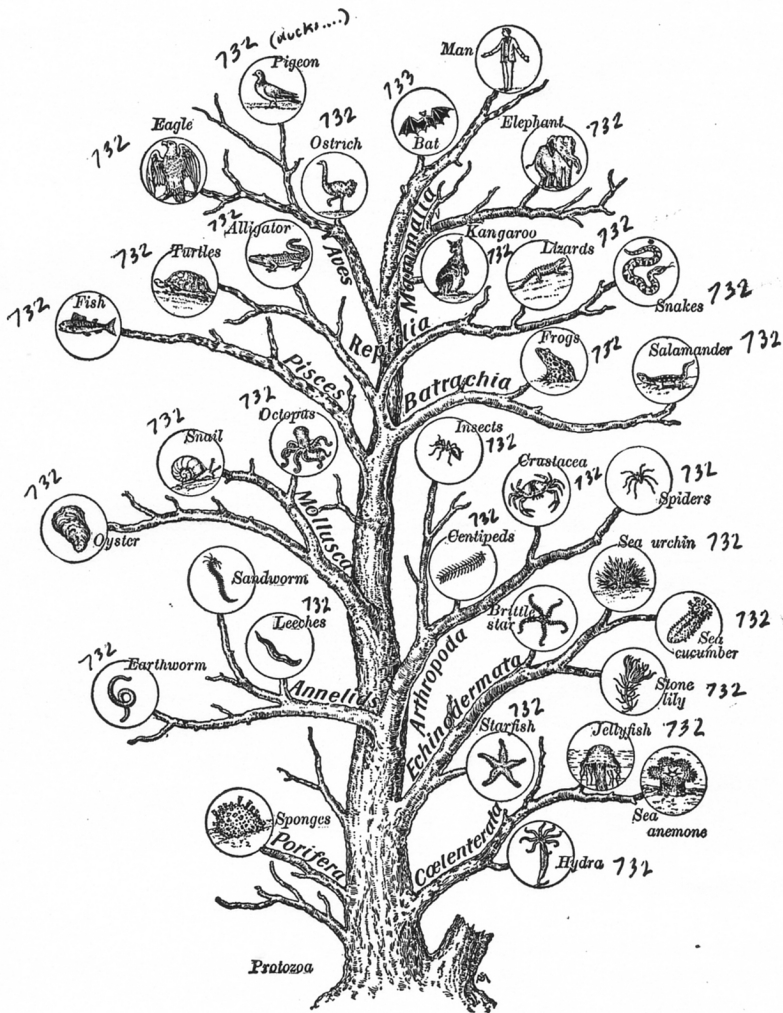


Fig. 2. — Genealogical tree of animal life, showing only the main branches (phyla). The diagram suggests the common origin of all animals in succession, with constant progressive change from the lowest (Protozoa) to more specialized types, and culminating in mammals and birds. The branching of a tree is usually taken to symbolize this interrelationship, but it should not be inferred that the origin of each phylum is in harmony with the branches as shown in this tree. Study this diagram with the one on page 19. From Gruenberg's *Elementary Biology* (Ginn and Company).

117 *

Fig. 14.—Diagram to show the time origins, phyletic interrelations, and geologic durations of plants and animals. Many of the Archeozoic kinds of animals named in the diagram are illustrated on Pl., p. 154.

